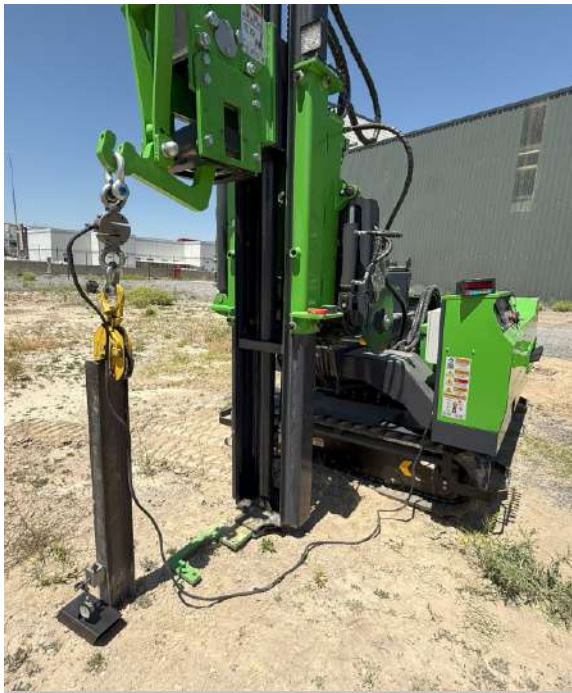


PULL-OUT TEST



INTRODUCTION

The test measures the force required to pull the embedded component out of the ground, providing insights into friction.

Test Setup:

- A specimen is prepared with the embedded element installed in the base material.
- A tensile load is applied to the protruding end of the embedded element using a hydraulic jack.
- The load is gradually increased until failure occurs.

Pull-out tests are widely used in civil engineering and solar projects to ensure structural integrity and safety.

TECHNICAL SPECIFICATIONS

PRODUCT CODE	PRODUCT NAME
151.01.16490	PULL-OUT TEST