



**MAZAKA**  
HEAVY INDUSTRY



***GARDEN LIFT***  
**CRAWLER PLATFORM**

***TPL65 D***

## SUPERIOR PERFORMANCE IN CHALLENGING CONDITIONS

*Mazaka Crawler Platform is specially designed for difficult and sloping terrain conditions.*

### HIGH REACH CAPACITY

With a 1-meter entry height and a maximum working height of 6.50 meters, it provides easy access to hard-to-reach areas.

### POWERFUL ENGINE

Equipped with an 21.3 kW Stage III diesel engine for high efficiency and durable performance.

### MOBILITY

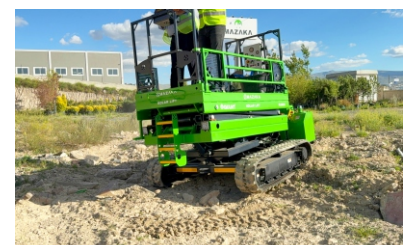
With a maximum driving speed of 4 km/h, it offers fast and efficient maneuverability on the job site.

### ROBUST AND STABLE

With a total weight of 2800 kg, it delivers strong ground grip and exceptional stability.



TECHNICAL SPECIFICATIONS	TPL65 D
Platform Capacity	500 kg.
Platform Closed Dimensions (Width/Length)	1200 x 3600 mm
Platform Open Dimensions (Width/Length)	1800 x 3600 mm
Maximum Working Height (Personnel)	6500 mm
Maximum Platform Height	4500 mm
Travel Height	2500 mm
Engine	21.3 kW Stage III
Fuel Type	Diesel
Fuel Tank	80 lt.
Oil Tank	50 lt.
Rubber Track	Standart
Basket Leveling	1200 - 1800 mm
Front and Rear Tilt	Operator
Left and Right Tilt	+ - 5°
Hydraulic Control Valve	Mechanic
Direction Control System	Hydraulic Joystick
Work Light	4 adet
Travel Speed	4 km/h
Emergency Stop at Ground Level	Evet
Climbing Ability	20°
Side Travel	10°
Length	3600 mm
Width	1200 - 1800 mm
Total Weight	2800 kg





# MAZAKA

HEAVY INDUSTRY



## Mazaka Factory

- 📍 Mimarsinan OSB Mah. 7. Cadde No:24  
Melikgazi/Kayseri/TÜRKİYE
- ☎️ +90 352 311 44 18
- 📞 +90 533 204 41 70
- ✉️ info@mazaka.eu

## Mazaka America LLC

- 📍 25 Old Kings Hwy N.Ste 13  
Darien, CT 06820
- ☎️ +1 203 904 8074
- ✉️ america@mazaka.eu

## Mazaka Europe

- 📍 Industriestrasse 12-16, 42929  
Wermelskirchen Germany
- ☎️ +49 2196 / 729 00 271
- ✉️ europe@mazaka.eu



SCAN  
QR

[www.mazaka.eu](http://www.mazaka.eu)

